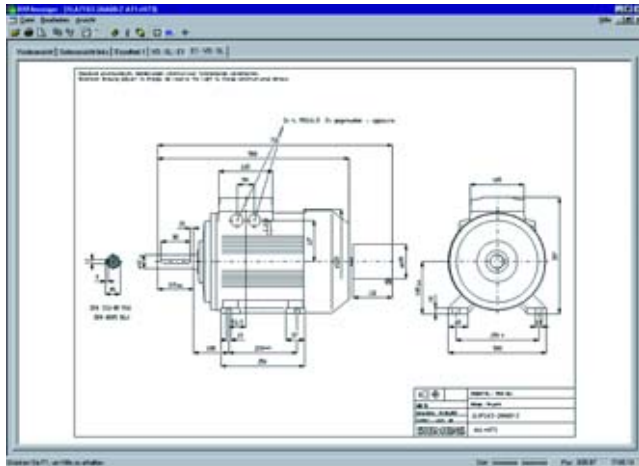


(part of the SD configurator)

A dimension drawing can be created in the SD configurator for every configurable motor. A dimension drawing can be requested for every other motor.



When a complete Order No. is entered with or without order codes, a dimension drawing can be called up under the "Documentation" tab.

These dimension drawings can be presented in different views and sections and printed.

The corresponding dimension sheets can be exported, saved and processed further in DXF format (interchange/import format for CAD systems) or as bitmap graphics.

The SD configurator has been integrated into the electronic Catalog CA 01 as a selection aid (for further information, Catalog D 81.1 part 11 "Appendix", "SD configurator selection tool").

The interactive Catalog CA 01 can be ordered from your local Siemens sales representative or on the Internet at

<http://www.siemens.com/automation/CA01>

At this address, you will also find links to Tips & Tricks and to downloads for function or content updates.

Order number for CA 01 10/2008, English International:

DVD: E86060-D4001-A510-C7-7600