

SD configurator

SD configurator (on DVD of the interactive catalog CA01 “Products for Automation and Drives”)



The interactive Catalog CA 01 contains over 100 000 products with approximately 5 million potential drive system product variants.

The **SD configurator** has been developed to facilitate selection of the correct motor and/or converter from the wide spectrum of A&D SD products. It is integrated as a “selection aid” in this catalog.

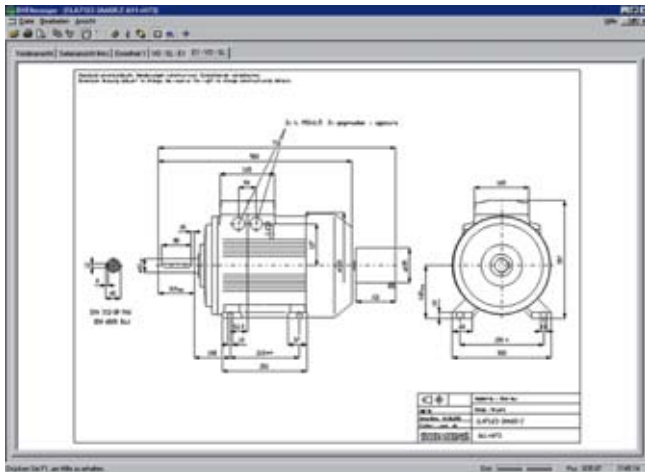
The **SD configurator** makes it easier to find the right drive solution. It supplies the correct order number as well as the corresponding documentation.

It can display operating instructions, factory test certificate, terminal box documentation, etc. and generates data sheets, dimension drawings and a start-up calculation for the relevant products.

Dimension sheet generator

(part of the SD configurator)

A dimension drawing can be created in the SD configurator for every configurable motor. A dimension drawing can be requested for every other motor.



It is also easy to assign a suitable converter to the selected motor.

The extensive help function not only explains the program functions, it also contains extensive technical background material.

SD configurator product range:

Low-voltage motors (energy-saving motors) with corresponding documentation and dimension drawings, low-voltage converters of the MICROMASTER 4 product series, SINAMICS G110 and SINAMICS G120 inverter chassis units as well as SINAMICS G120D distributed frequency inverters, and SIMATIC ET 200S FC and SIMATIC ET 200pro FC frequency converters for distributed I/O.

The interactive CA 01 catalog can be ordered from your local Siemens sales representative or on the Internet at <http://www.siemens.com/automation/CA01>

Links to tips, tricks and downloads for functional or content updates can be found at this address.

Order No. for CA 01, English International:

DVD: **E86060-D4001-A510-C7-7600**

Note: The SD configurator offline tool within CA 01 can be updated for the new 1LE1 motor series online over the Internet.

When a complete Order No. is entered with or without order codes, a dimension drawing can be called up under the “Documentation” tab.

These dimension drawings can be presented in different views and sections and printed.

The corresponding dimension sheets can be exported, saved and processed further in DXF format (interchange/import format for CAD systems) or as bitmap graphics.

The SD configurator has been integrated into the CA 01 electronic catalog as a selection aid (for further information, see above).

The interactive CA 01 catalog can be ordered from your local Siemens sales representative or on the Internet at <http://www.siemens.com/automation/CA01>.

At this address, you will also find links to Tips & Tricks and to downloads for function or content updates.

Order No. for CA 01, English International

DVD: **E86060-D4001-A510-C7-7600**

Note:

The SD configurator offline tool within CA01 can be updated for the new 1LE1 motor series online over the Internet.