

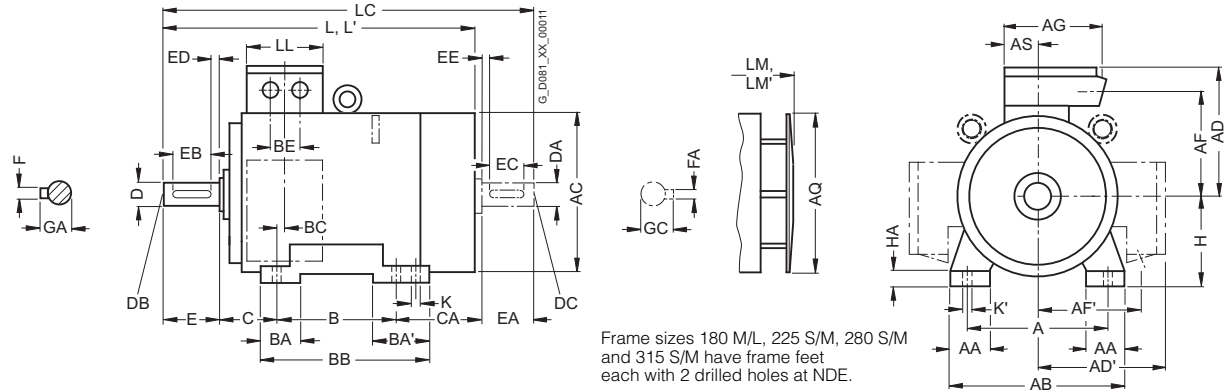
# SIMOTICS XP 1MJ Explosion-Proof Motors

## Dimensions

Cast-iron series 1MJ6, 1MJ7  
Frame sizes 180 M to 315 M

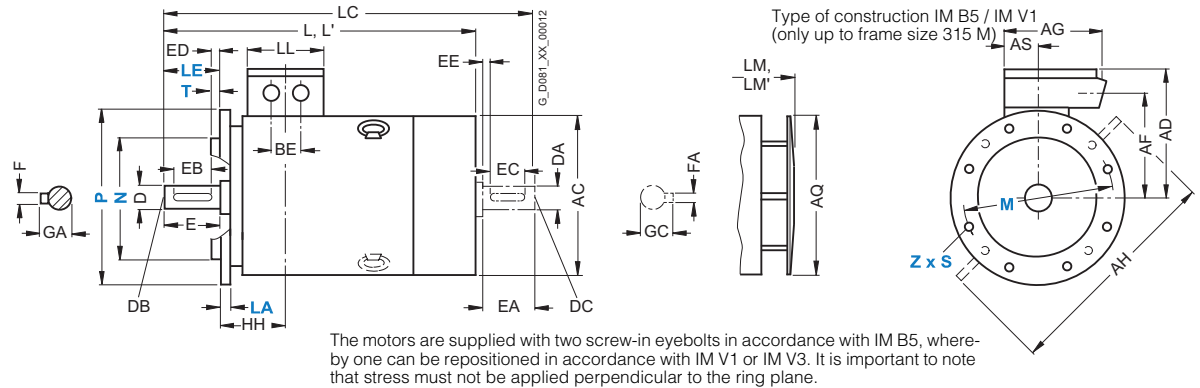
### Dimensional drawings

#### Type of construction IM B3



#### Types of construction IM B5 and IM V1

For flange dimensions, see section flange dimension (Z = the number of retaining holes)



For motor			Dimension designation acc. to IEC																						
Frame size	Type	Number of poles	A	AA	AB	AC <sup>1)</sup>	AD	AD'	AF	AF'	AG	AH	AQ	AS	B*	BA	BA'	BB	BC	BE	C	CA*	H	HH	HA
180 M	1MJ6183	2, 4	279	65	344	375	306	306	259	259	220	470	340	82	241	70	108	319	35	75	121	259	180	156	26
180 L	1MJ6186	4, 6, 8	279	65	344	375	306	306	259	259	220	470	340	82	279	70	108	319	35	75	121	221	180	156	26
200 L	1MJ6206	2	318	80	398	415	349	349	289	289	262	530	340	98.5	305	85	85	355	42	85	133	239	200	175	34
	1MJ6207	2, 4, 6, 8	318	80	398	415	349	349	289	289	262	530	340	98.5	305	85	85	355	42	85	133	239	200	175	34
225 S	1MJ7220	4, 8	356	80	436	442	377	377	315	315	262	580	425	100	286	85	110	361	25	90	149	269	225	174	34
225 M	1MJ7223	2, 4, 6, 8	356	80	436	442	377	377	315	315	262	580	425	100	311	85	110	361	25	90	149	244	225	174	34
250 M	1MJ7253	2, 4, 6, 8	406	100	506	505	466	466	353	353	336	645	470	120	349	100	100	409	39	95	168	283	250	207	42
280 S	1MJ7280	2, 4, 6, 8	457	100	557	555	491	491	395	395	336	700	525	120	368	100	151	479	30	95	190	317	280	220	42
280 M	1MJ7283	2, 4, 6, 8	457	100	557	555	491	491	395	395	336	700	525	120	419	100	151	479	30	95	190	266	280	220	42
315 S	1MJ7310	2, 4, 6, 8	508	120	628	620	558	558	448	448	410	805	590	135	406	125	171	527	32	90	216	358	315	248	56
315 M	1MJ7313	2, 4, 6, 8	508	120	628	620	558	558	448	448	410	805	590	135	457	125	171	527	32	90	216	307	315	248	56

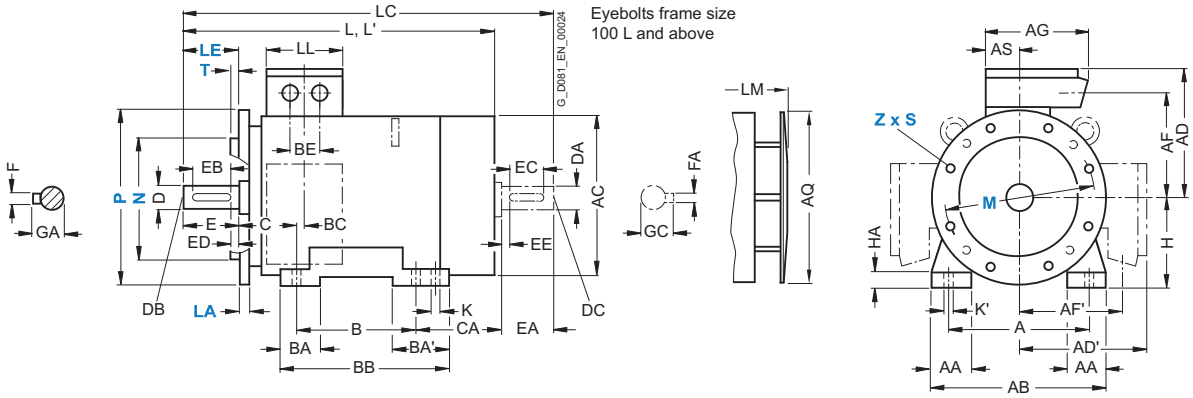
\* This dimension is assigned in DIN EN 50347 to the frame size listed.

1) Measured across the bolt heads.

### Dimensional drawings (continued)

#### Type of construction IM B35

For flange dimensions, see section flange dimension (Z = the number of retaining holes)



For motor		Dimension designation acc. to IEC										DE shaft extension				NDE shaft extension								
Frame size	Type	Number of poles	K	K'	L	L <sup>1)</sup>	LC <sup>2)</sup>	LL	LM	LM <sup>1)</sup>	D	DB	E	EB	ED	F	GA	DA	DC	EA	EC	EE	FA	GC
180 M	1MJ6183	2, 4	15	20	715	770	841	164	796.5	885	48	M16	110	100	5	14	51.5	48	M16	110	100	5	14	51.5
180 L	1MJ6186	4, 6, 8	15	20	715	–	841	164	796.5	–	48	M16	110	100	5	14	51.5	48	M16	110	100	5	14	51.5
200 L	1MJ6206	2	19	25	771.5	825	897	197	853	910	55	M20	110	100	5	16	59	48	M16	110	100	5	14	51.5
		6	–	–	–	–	–	–	–	–	–	–	–	–	–	–	–	55	M20	–	–	–	–	16
	1MJ6207	2	19	25	771.5	825	897	197	853	910	55	M20	110	100	5	16	59	48	M16	110	100	5	14	51.5
		4, 6, 8	–	–	–	–	–	–	–	–	–	–	–	–	–	–	–	55	M20	–	–	–	–	16
225 S	1MJ7220	4, 8	19	25	839	–	954	197	939	–	60	M20	140	125	10	18	64	55	M20	110	100	5	16	59
225 M	1MJ7223	2	19	25	809	855	924	197	909	955	55	M20	110	100	5	16	59	48	M16	110	100	5	14	51.5
		4, 6, 8	–	–	839	–	954	–	939	–	60	M20	140	125	10	18	64	55	M20	–	–	–	–	16
250 M	1MJ7253	2	24	30	930	1010	1050	234	1035	1110	60	M20	140	125	10	18	64	55	M20	110	100	5	16	59
		4, 6, 8	–	–	–	–	1080	–	–	–	65	–	–	–	–	–	69	60	–	140	125	10	18	64
280 S	1MJ7280	2	24	30	1010	1080	1155	234	1120	1230	65	M20	140	125	10	18	69	60	M20	140	125	10	18	64
		4, 6, 8	–	–	–	–	–	–	–	–	75	–	–	–	–	–	20	79.5	65	–	–	–	–	69
280 M	1MJ7283	2	24	30	1010	1080	1155	234	1120	1230	65	M20	140	125	10	18	69	60	M20	140	125	10	18	64
		4, 6, 8	–	–	–	–	–	–	–	–	75	–	–	–	–	–	20	79.5	65	–	–	–	–	69
315 S	1MJ7310	2	28	35	1114	1185	1260	266	1224	1295	65	M20	140	125	10	18	69	60	M20	140	125	10	18	64
		4, 6, 8	–	–	1140	–	1290	–	1250	–	80	–	170	140	–	–	22	85	70	–	–	–	–	20
315 M	1MJ7313	2	28	35	1114	1185	1260	266	1224	1295	65	M20	140	125	10	18	69	60	M20	140	125	10	18	64
		4, 6, 8	–	–	1140	–	1290	–	1250	–	80	–	170	140	–	–	22	85	70	–	–	–	–	20

<sup>1)</sup> For version with low-noise fan.

<sup>2)</sup> In the low-noise version, a second shaft extension is not possible.