

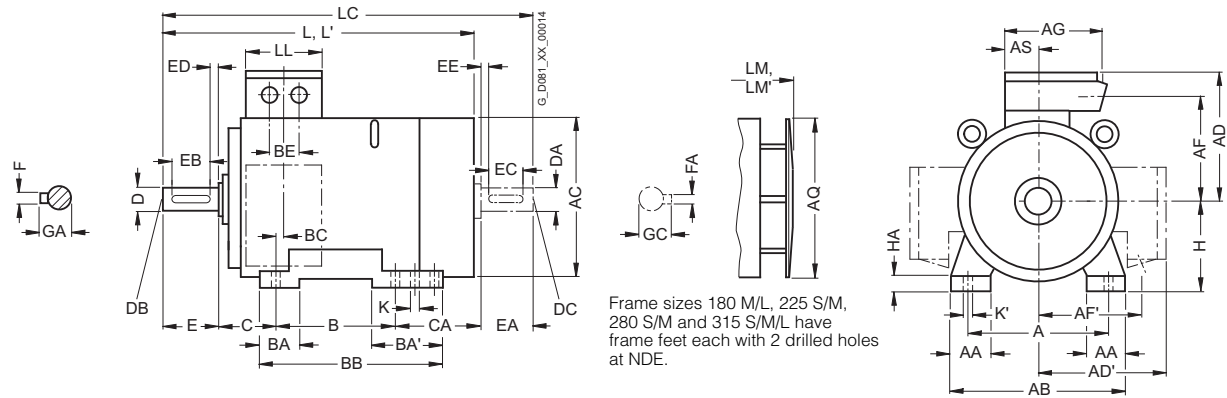
# SIMOTICS XP 1LG Explosion-Proof Motors

## Dimensions

Cast-iron series 1LG4  
Frame sizes 180 M to 315 L

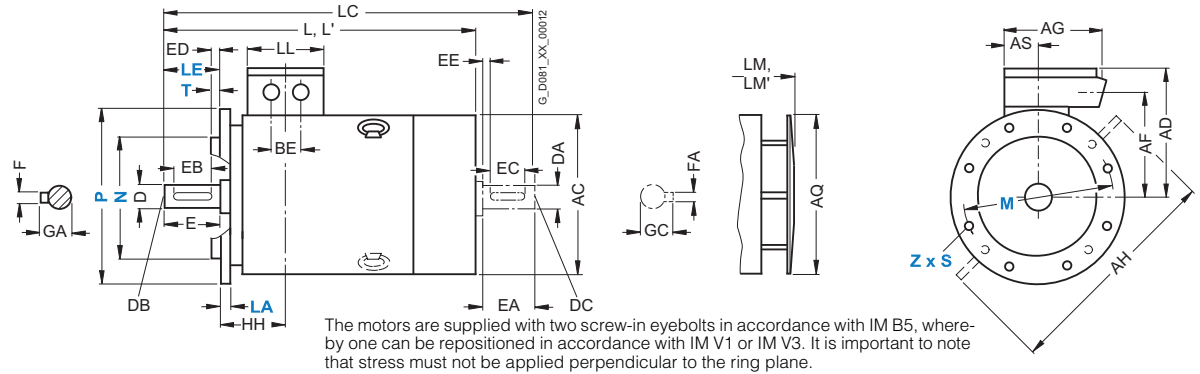
### Dimensional drawings

#### Type of construction IM B3



#### Types of construction IM B5 and IM V1

For flange dimensions, see section flange dimension (Z = the number of retaining holes)



For motor		Dimension designation acc. to IEC																						
Frame size	Type	Number of poles	A	AA	AB	AC <sup>1)</sup>	AD	AD'	AF	AF'	AG	AH	AQ	AS	B*	BA	BA'	BB	BC	BE	C	CA*	H	HA
180 M	1LG4183	2, 4	279	65	339	363	262	262	220	220	152	452	340	71	241	70	111	328	36	54	121	202	180	20
180 L	1LG4186	4, 6, 8	279	65	339	363	262	262	220	220	152	452	340	71	279	70	111	328	36	54	121	164	180	20
	1LG4188	2, 4, 6, 8	279	65	339	363	262	220	220	152	452	340	71	279	70	111	328	36	54	121	215	180	20	
200 L	1LG4206	2, 6	318	70	378	402	300	300	247	247	260	512	340	96	305	80	80	355	63	85	133	177	200	25
	1LG4207	2, 4, 6, 8	318	70	378	402	300	300	247	247	260	512	340	96	305	80	80	355	63	85	133	177	200	25
	1LG4208	2, 6, 4, 8	318	70	378	402	300	300	247	247	260	512	340	96	305	80	80	355	63	85	133	234	200	25
																						177		
225 S	1LG4220	4, 8	356	80	436	442	325	325	272	272	260	556	425	96	286	85	110	361	47	85	149	218	225	34
225 M	1LG4223	2	356	80	436	442	325	325	272	272	260	556	425	96	311	85	110	361	47	85	149	193	225	34
	1LG4228	4, 6, 8, 2	356	80	436	442	325	325	272	272	260	556	425	96	311	85	110	361	47	85	149	253	225	34
250 M	1LG4253	2, 4, 6, 8	406	100	490	495	392	392	308	308	300	620	470	118	349	100	100	409	69	110	168	235	250	40
	1LG4258	2, 4, 6, 8	406	100	490	495	392	392	308	308	300	620	470	118	349	100	100	409	69	110	168	235	250	40
																						305		
																						235		
280 S	1LG4280	2, 4, 6, 8	457	100	540	555	432	432	348	348	300	672	525	118	368	100	151	479	62	110	190	267	280	40
280 M	1LG4283	2, 4, 6, 8	457	100	540	555	432	432	348	348	300	672	525	118	419	100	151	479	62	110	190	216	280	40
	1LG4288	2, 4, 6, 8	457	100	540	555	432	432	348	348	300	672	525	118	419	100	151	479	62	110	190	326	280	40
																						216		
315 S	1LG4310	2	508	120	610	610	500	500	400	400	380	780	590	154	406	125	176	527	69	110	216	315	315	50
	1LG4310	4, 6, 8	508	120	610	610	500	500	400	400	380	780	590	154	457	125	176	527	69	110	216	264	315	50
315 M <sup>2)</sup>	1LG4313	2	508	120	610	610	500	500	400	400	380	780	590	154	457	125	176	527	69	110	216	264	315	50
	1LG4313	4, 6, 8	508	120	610	610	500	500	400	400	380	780	590	154	457	125	176	527	69	110	216	264	315	50
315 L <sup>2)</sup>	1LG4316/317	2	508	120	610	610	500	500	400	400	380	780	590	154	508	125	176	578	69	110	216	373	315	50
	1LG4316/317	4, 6, 8	508	120	610	610	500	500	400	400	380	780	590	154	508	125	176	578	69	110	216	373	315	50
	1LG4318	8	508	120	610	610	500	500	400	400	380	780	590	154	508	125	176	578	69	110	216	513	315	50
	1LG4318	6	508	120	610	610	500	500	400	400	380	780	590	154	508	125	176	578	69	110	216	513	315	50

\* This dimension is assigned in DIN EN 50347 to the frame size listed.

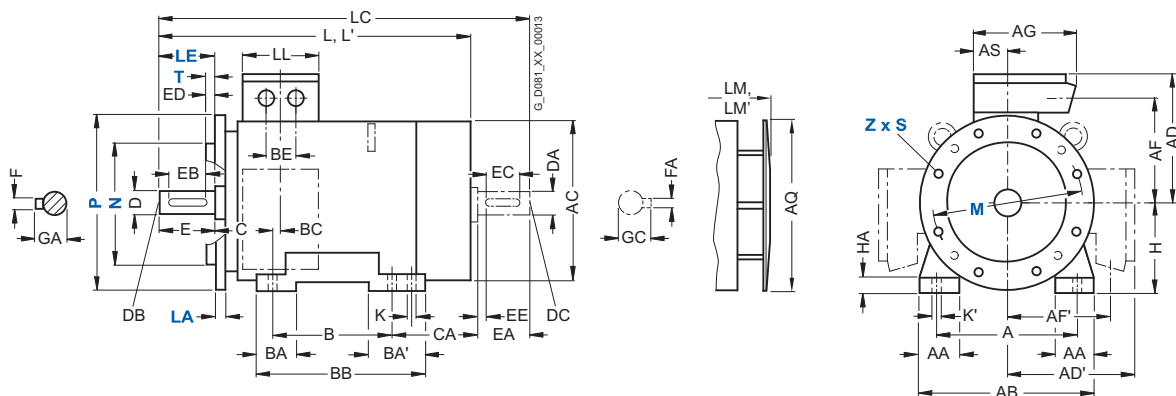
<sup>1)</sup> Measured across the bolt heads.

<sup>2)</sup> With order codes for connection box positions (K09, K10, K11) only fitted feet with 3 drilled holes with dimension "B" (406, 457 and 508 mm). BB will then be 666 mm.

### Dimensional drawings (continued)

#### Type of construction IM B35

For flange dimensions, see section flange dimension (Z = the number of retaining holes)



For motor		Number of poles	Dimension designation acc. to IEC							DE shaft extension					NDE shaft extension										
Frame size	Type		HH	K	K'	L	L <sup>(1)</sup>	LC <sup>(2)</sup>	LL	LM	LM <sup>(1)</sup>	D	DB	E	EB	ED	F	GA	DA	DC	EA	EC	EE	FA	GC
180 M	1LG4183	2, 4	157	15	19	669	669	784	132	759	759	48	M16	110	100	5	14	51.5	48	M16	110	100	5	14	51.5
180 L	1LG4186	4, 6, 8	157	15	19	669	–	784	132	759	–	48	M16	110	100	5	14	51.5	48	M16	110	100	5	14	51.5
	1LG4188	2, 4, 6, 8	157	15	19	720	720	835	132	810	810	48	M16	110	100	5	14	51.5	48	M16	110	100	5	14	51.5
200 L	1LG4206	2, 6	196	19	25	720	754	835	192	810	844	55	M20	110	100	5	16	59	55	M20	110	100	5	16	59
	1LG4207	2, 4, 6, 8	196	19	25	720	754	835	192	810	844	55	M20	110	100	5	16	59	55	M20	110	100	5	16	59
	1LG4208	2, 6	196	19	25	777	811	892	192	867	901	55	M20	110	100	5	16	59	55	M20	110	100	5	16	59
		4, 8	–	–	–	720	–	835	–	810	–	–	–	–	–	–	–	–	–	–	–	–	–	–	
225 S	1LG4220	4, 8	196	19	25	789	–	903	192	889	–	60	M20	140	125	10	18	64	55	M20	110	100	5	16	59
225 M	1LG4223	2	196	19	25	759	793	873	192	859	893	55	M20	110	100	5	16	59	48	M16	110	100	5	14	51.5
		4, 6, 8	–	–	–	789	–	903	–	889	–	60	M20	140	125	10	18	64	55	M20	110	100	5	16	59
	1LG4228	2	196	19	25	819	853	933	192	919	953	55	M20	110	100	5	16	59	48	M16	110	100	5	14	51.5
		4, 6, 8	–	–	–	849	–	963	–	949	–	60	M20	140	125	10	18	64	55	M20	110	100	5	16	59
250 M	1LG4253	2	237	24	30	887	924	1002	236	987	1024	60	M20	140	125	10	18	64	55	M20	110	100	5	16	59
		4, 6, 8	–	–	–	–	–	1032	–	–	–	65	M20	140	125	10	18	69	60	M20	140	125	10	18	64
	1LG4258	2	237	24	30	887	924	1002	236	987	1024	60	M20	140	125	10	18	64	55	M20	110	100	5	16	59
		4	–	–	–	957	–	1102	–	1057	–	65	M20	140	125	10	18	69	60	M20	140	125	10	18	64
		6, 8	–	–	–	887	–	1032	–	987	–	65	M20	140	125	10	18	69	60	M20	140	125	10	18	64
280 S	1LG4280	2	252	24	30	960	998	1105	236	1070	1108	65	M20	140	125	10	18	69	60	M20	140	125	10	18	64
		4, 6, 8	–	–	–	–	–	–	–	–	–	75	M20	140	125	10	20	79.5	65	M20	140	125	10	18	69
280 M	1LG4283	2	252	24	30	960	998	1105	236	1070	1108	65	M20	140	125	10	18	69	60	M20	140	125	10	18	64
		4, 6, 8	–	–	–	–	–	–	–	–	–	75	M20	140	125	10	20	79.5	65	M20	140	125	10	18	69
	1LG4288	2	252	24	30	1070	1108	1215	236	1180	1218	65	M20	140	125	10	18	69	60	M20	140	125	10	18	64
		4	–	–	–	–	–	–	–	–	–	75	M20	140	125	10	20	79.5	65	M20	140	125	10	18	69
		6, 8	–	–	–	960	–	1105	–	1070	–	75	M20	140	125	10	20	79.5	65	M20	140	125	10	18	69
315 S	1LG4310	2	285	28	35	1072	1142	1217	307	1182	1252	65	M20	140	125	10	18	69	60	M20	140	125	10	18	64
	1LG4310	4, 6, 8	–	–	–	1102	–	1247	–	1212	–	80	M20	170	140	25	22	85	70	M20	140	125	10	20	74.5
315 M <sup>(3)</sup>	1LG4313	2	285	28	35	1072	1142	1217	307	1182	1252	65	M20	140	125	10	18	69	60	M20	140	125	10	18	64
	1LG4313	4, 6, 8	–	–	–	1102	–	1247	–	1212	–	80	M20	170	140	25	22	85	70	M20	140	125	10	20	74.5
315 L <sup>(3)</sup>	1LG4316/317	2	285	28	35	1232	1302	1377	307	1342	1412	65	M20	140	125	10	18	69	60	M20	140	125	10	18	64
	1LG4316/317	4, 6, 8	–	–	–	1262	–	1407	–	1372	–	80	M20	170	140	25	22	85	70	M20	140	125	10	20	74.5
	1LG4318	8	–	–	–	–	–	–	–	–	–	80	M20	170	140	25	22	85	70	M20	140	125	10	20	74.5
	1LG4318	6	285	28	35	1402	–	1547	307	1512	–	80	M20	170	140	25	22	85	70	M20	140	125	10	20	74.5

<sup>1)</sup> For version with low-noise fan for 2-pole motors.

<sup>2)</sup> In the low-noise version, a second shaft extension is not possible.

<sup>3)</sup> With order codes for connection box positions (K09, K10, K11) only fitted feet with 3 drilled holes with dimension "B" (406, 457 and 508 mm). BB will then be 666 mm.