

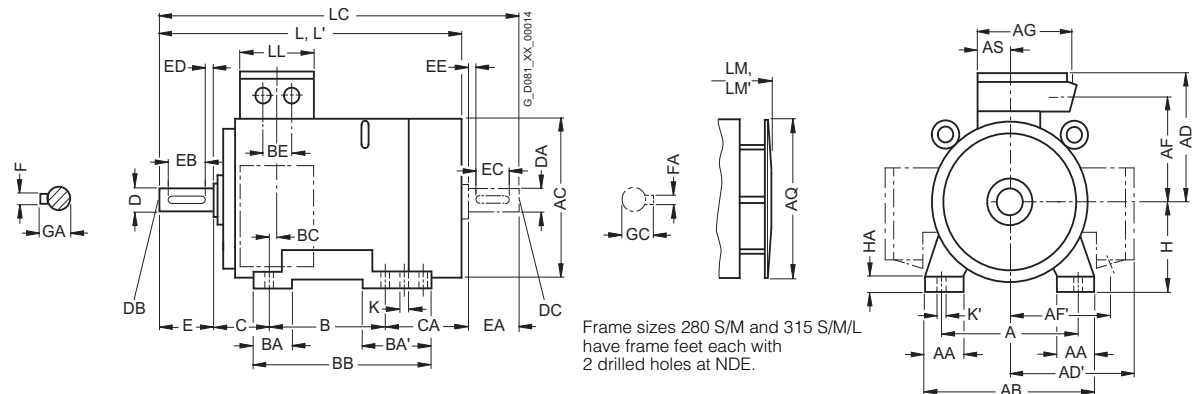
# SIMOTICS XP 1LG Explosion-Proof Motors

## Dimensions

Cast-iron series 1LG6  
Frame sizes 280 S to 315 L

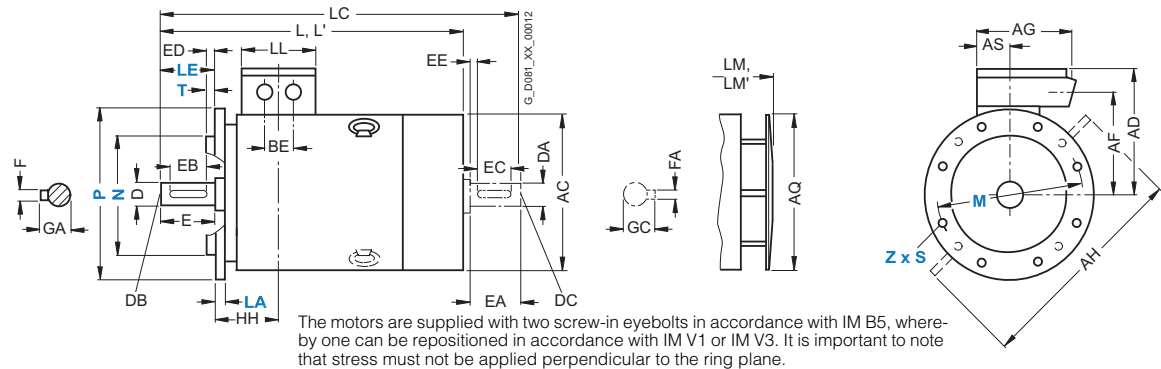
### Dimensional drawings

#### Type of construction IM B3



#### Types of construction IM B5 and IM V1

For flange dimensions, see section flange dimension (Z = the number of retaining holes)



For motor			Dimension designation acc. to IEC																					
Frame size	Type	Number of poles	A	AA	AB	AC <sup>1)</sup>	AD	AD'	AF	AF'	AG	AH	AQ	AS	B*	BA	BA'	BB	BC	BE	C	CA*	H	HA
280 S	1LG6280	2	457	100	540	555	432	432	348	348	300	672	525	118	368	100	151	479	62	110	190	267	280	40
		4, 6, 8	457	100	540	555	432	432	348	348	300	672	525	118	419	100	151	479	62	110	190	326	280	40
		4	457	100	540	555	432	432	348	348	300	672	525	118	419	100	151	479	62	110	190	326	280	40
		6, 8	457	100	540	555	432	432	348	348	300	672	525	118	419	100	151	479	62	110	190	326	280	40
280 M	1LG6283	2	457	100	540	555	432	432	348	348	300	672	525	118	419	100	151	479	62	110	190	326	280	40
		4, 6	457	100	540	555	432	432	348	348	300	672	525	118	419	100	151	479	62	110	190	326	280	40
315 S	1LG6310	2	508	120	610	610	500	500	400	400	380	780	590	154	406	125	176	527	69	110	216	315	315	50
		4, 6, 8	508	120	610	610	500	500	400	400	380	780	590	154	457	125	176	527	69	110	216	264	315	50
315 M <sup>2)</sup>	1LG6313	8	508	120	610	610	500	500	400	400	380	780	590	154	457	125	176	578	69	110	216	424	315	50
		2	508	120	610	610	500	500	400	400	380	780	590	154	457	125	176	578	69	110	216	424	315	50
315 L <sup>2)</sup>	1LG6313	4, 6	508	120	610	610	500	500	400	400	380	780	590	154	508	125	176	578	69	110	216	373	315	50
	1LG6316	2	508	120	610	610	500	500	400	400	380	780	590	154	508	125	176	578	69	110	216	373	315	50
	1LG6316	4, 6	508	120	610	610	500	500	400	400	380	780	590	154	508	125	176	578	69	110	216	373	315	50
	1LG6316	8	508	120	610	610	500	500	400	400	380	780	590	154	508	125	176	578	69	110	216	513	315	50
	1LG6317	2	508	120	610	610	500	500	400	400	380	780	590	154	508	125	176	578	69	110	216	513	315	50
	1LG6317	4, 6	508	120	610	610	500	500	400	400	380	780	590	154	508	125	176	578	69	110	216	513	315	50
	1LG6317	8	508	120	610	610	500	500	400	400	380	780	590	154	508	125	176	578	69	110	216	513	315	50
	1LG6318	2	508	120	610	610	651	651	524	524	470	780	590	165	508	125	176	648	69	135	216	513	315	50
1LG6318	4																							
1LG6318	6, 8						500	500	400	400	380								110					

\* This dimension is assigned in DIN EN 50347 to the frame size listed.

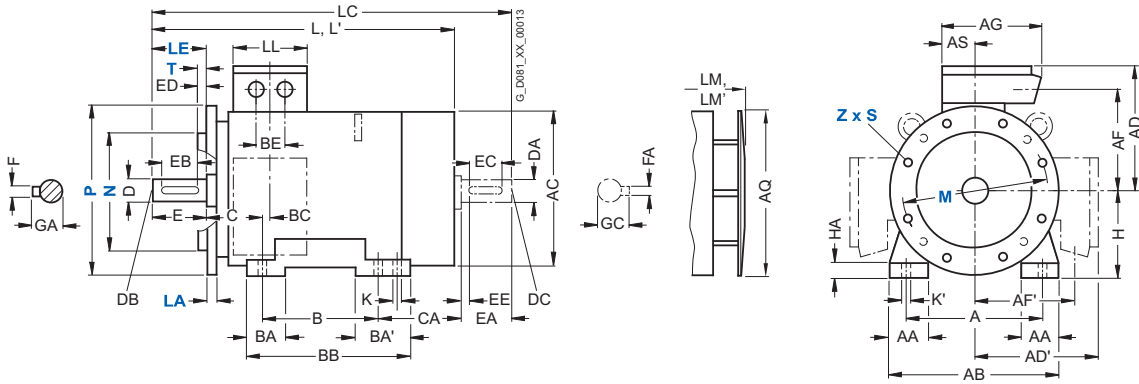
1) Measured across the bolt heads.

2) With order codes for connection box positions (K09, K10, K11) only fitted feet with 3 drilled holes with dimension "B" (406, 457 and 508 mm). BB will then be 666 mm.

### Dimensional drawings (continued)

#### Type of construction IM B35

For flange dimensions, see section flange dimension (Z = the number of retaining holes)



For motor		Dimension designation acc. to IEC										DE shaft extension				NDE shaft extension							
Frame size	Type	Number of poles	HH	K	K'	L	LC	LL	LM	D	DB	E	EB	ED	F	GA	DA	DC	EA	EC	EE	FA	GC
280 S	1LG6280	2	252	24	30	998	1105	236	1108	65	M20	140	125	10	18	69	60	M20	140	125	10	18	64
		4, 6, 8				960	1070	75	M20	140	125	10	20	79.5	65	M20	140	125	10	18	69		
						1070	1180	75	M20	140	125	10	20	79.5	65	M20	140	125	10	18	69		
280 M	1LG6283	2	252	24	30	1108	1215	236	1218	65	M20	140	125	10	18	69	60	M20	140	125	10	18	64
		4				1070	1180	75	M20	140	125	10	20	79.5	65	M20	140	125	10	18	69		
		6, 8				960	1105	75	M20	140	125	10	20	79.5	65	M20	140	125	10	18	69		
	1LG6288	2	252	24	30	1108	1215	236	1218	65	M20	140	125	10	18	69	60	M20	140	125	10	18	64
		4, 6				1070	1180	75	M20	140	125	10	20	79.5	65	M20	140	125	10	18	69		
315 S	1LG6310	2	285	28	35	1142	1217	307	1252	65	M20	140	125	10	18	69	60	M20	140	125	10	18	64
	1LG6310	4, 6, 8				1102	1247		1212	80	M20	170	140	25	22	85	70	M20	140	125	10	20	74.5
315 M	1LG6313	8	285	28	35	1102	1247	307	1212	80	M20	170	140	25	22	85	70	M20	140	125	10	20	74.5
		2	285	28	35	1302	1377	307	1412	65	M20	140	125	10	18	69	60	M20	140	125	10	18	64
		4, 6				1262	1407		1372	80	M20	170	140	25	22	85	70	M20	140	125	10	20	74.5
315 L	1LG6316	2	285	28	35	1302	1377	307	1412	65	M20	140	125	10	18	69	60	M20	140	125	10	18	64
	1LG6316	4, 6				1262	1407		1372	80	M20	170	140	25	22	85	70	M20	140	125	10	20	74.5
	1LG6316	8							80	M20	170	140	25	22	85	70	M20	140	125	10	20	74.5	
	1LG6317	2	285	28	35	1442	1517	307	1552	65	M20	140	125	10	18	69	60	M20	140	125	10	18	64
	1LG6317	4, 6				1402	1547		1512	80	M20	170	140	25	22	85	70	M20	140	125	10	20	74.5
	1LG6317	8				1262	1407		1372	80	M20	170	140	25	22	85	70	M20	140	125	10	20	74.5
	1LG6318	2	285	28	35	1442	1517	330	1552	65	M20	140	125	10	18	69	60	M20	140	125	10	18	64
	1LG6318	4				1402	1547		1512	80 <sup>1)</sup>	M20	170	140	25	22	85	70	M20	140	125	10	20	74.5
	1LG6318	6, 8						307	80	M20	170	140	25	22	85	70	M20	140	125	10	20	74.5	

<sup>1)</sup> Diameters up to 90 are possible.