

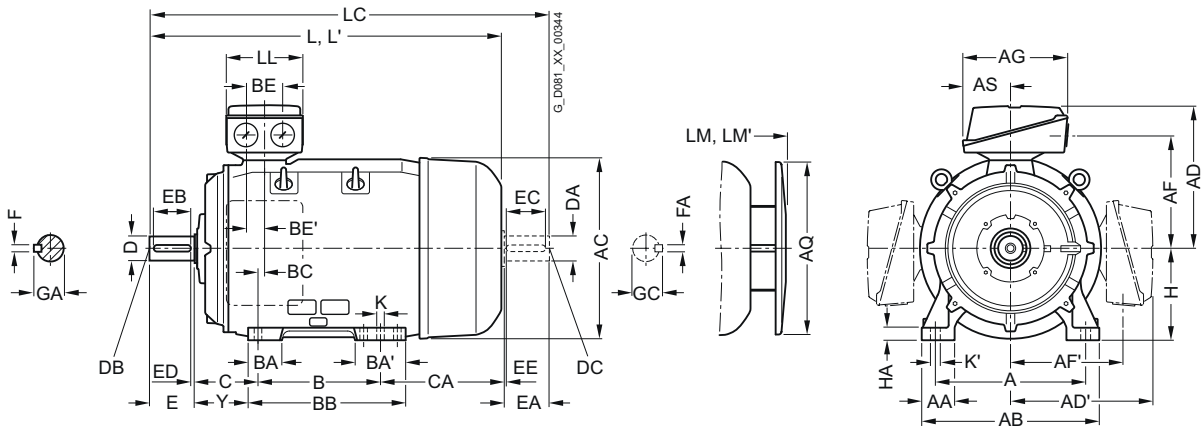
# SIMOTICS SD 1LE1 Standard Motors

## Dimensions

Cast-iron series 1LE1501, 1LE1521, 1LE1601, 1LE1621  
Self-ventilated, frame sizes 180 M to 315 L

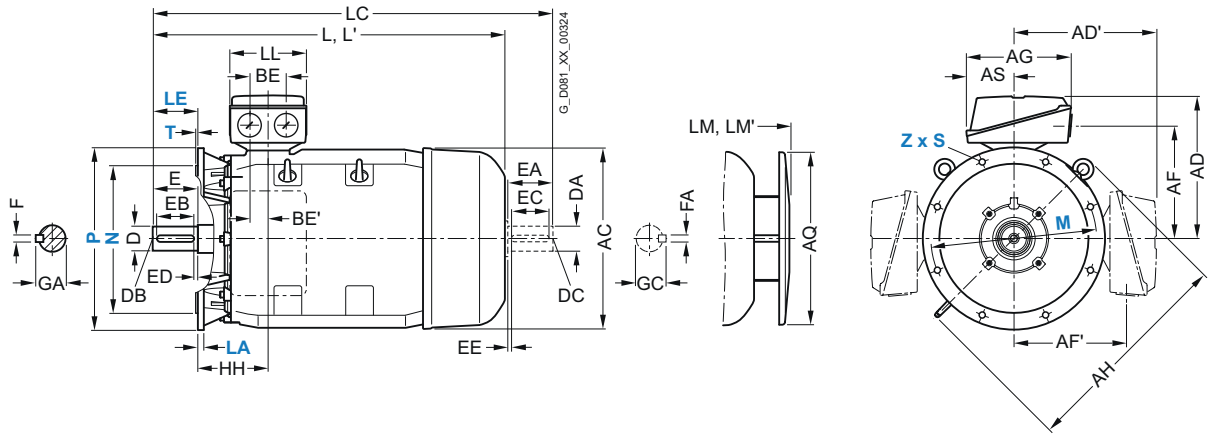
### Dimensional drawings

#### Type of construction IM B3



#### Types of construction IM B5, IM V1

For flange dimensions, see section flange dimension (Z = the number of retaining holes)



For motor Frame size	Type	No. of poles	Dimension designation acc. to IEC																					
			A	AA	AB	AC	AD	AD'	AF	AF'	AG	AH	AQ	AS	B*	BA	BA'	BB	BC	BE	BE'	C <sup>1)</sup>	CA'	
180 M/ 180 L	1EA2, 1EB2, 1EB4, 1EC4, 1EC6	2, 4, 6	279	65	339	356	286	286	234	234	189	468	340	91	241	85	120	328	34	60	30	121	202	
	1EA6, 1EB6	2, 4																						
200 L	2AA4, 2AA5, 2AB5, 2AC4, 2AC5, 2AA6	2, 4, 6 2	318	60	378	396	315	315	259	259	265	533	340	112	305	104	104	355	31	85	43	133	177	
225 S 225 M	2BB0	4	356	80	436	449	338	338	282	282	266	556	425	112	286	92	117	361	15	85	43	149	218	
	2BA2, 2BA6 2BB2, 2BC2, 2BB6, 2BC6	2 4, 6	356	80	436	449	338	338	282	282	266	556	425	112	311	92	117	361	15	85	43	149	193	
250 M	2CA2, 2CA6	2	406	100	490	497	410	410	322	322	319	620	470	145	349	102	102	409	24	110	55	168	235	
	2CB2, 2CC2, 2CB6, 2CC6	4, 6																						
280 S 280 M	2DA0	2	457	100	540	551	433	433	345	345	319	672	525	145	368	101	152	479	20	110	55	190	267	
	2DB0, 2DC0 2DA2 2DB2, 2DC2, 2DC6 2DA6 2DB6	4, 6 2 4, 6 2 4	457	100	540	551	433	433	345	345	319	672	525	145	419	101	152	479	20	110	55	190	216    326	
315 S 315 M	3AA0	2	508	120	610	616	515	515	404	404	374	780	590	164	406	113	170	527	22	110	55	216	295	
	3AB0, 3AC0 3AA2 3AB2 3AC2	4, 6 2 4 6	508	120	610	616	515	515	404	404	374	780	590	164	457	113	170	578	22	110	55	216	409	
315 L	3AA4	2	508	120	610	616	515	515	404	404	374	780	590	164	508	113	170	578	22	110	55	216	358	
	3AB4, 3AC4, 3AC5 3AA5, 3AA6	4, 6 2																					244	
	3AB5, 3AB6, 3AC6	4, 6													176	227	648						513	

\* This dimension is assigned in DIN EN 50347 to the frame size listed.

<sup>1)</sup> Additional information – not a standard dimension according to DIN EN 50347.

# SIMOTICS SD 1LE1 Standard Motors

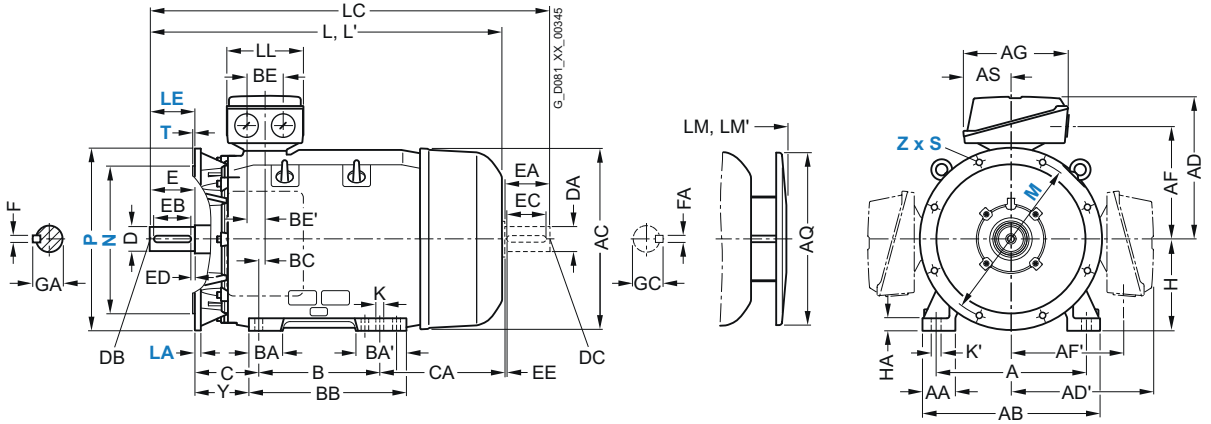
## Dimensions

Cast-iron series 1LE1501, 1LE1521, 1LE1601, 1LE1621  
Self-ventilated, frame sizes 180 M to 315 L

### Dimensional drawings (continued)

#### Type of construction IM B35

For flange dimensions, see section flange dimension (Z = the number of retaining holes)



Type	DE shaft extension													NDE shaft extension													
1LE1501, 1LE1521 1LE1601, 1LE1621	H	HA	Y <sup>1)</sup>	HH	K	K'	L	L' <sup>2)</sup>	LC <sup>3)</sup>	LL	LM	LM <sup>2)</sup>	D	DB	E	EB	ED	F	GA	DA	DC	EA	EC	EE	FA	GC	
1EA2, 1EB2, 1EB4, 1EC4, 1EA6, 1EB6	180	20	95	155	15	19	668	668	784	164	758	758	48	M16	110	100	5	14	52	48	M16	110	100	5	14	52	
2AA4, 2AA5, 2AB5, 2AC4, 2AC5, 2AA6	200	25	108	164	19	25	721	755	835	197	811	845	55	M20	110	100	5	16	59	55	M20	110	100	5	16	59	
2BB0	225	34	124	164	19	25	788	-	903	197	888	-	60	M20	140	125	10	18	64	55	M20	110	100	5	16	59	
2BA2, 2BA6	225	34	124	164	19	25	818	852	933	197	918	952	55	M20	110	100	5	16	59	48	M16	110	100	5	14	52	
2BB2, 2BC2, 2BB6, 2BC6	-	-	-	-	-	-	848	-	963	948	-	60	-	-	140	125	10	18	64	55	M20	-	-	-	-	16	59
2CA2, 2CA6	250	40	138	192	24	30	887	924	1002	233	987	1024	60	M20	140	125	10	18	64	55	M20	110	100	5	16	59	
2CB2, 2CC2, 2CB6, 2CC6	-	-	-	-	-	-	-	1032	-	-	-	65	-	-	-	-	-	-	69	60	-	140	125	10	18	64	
2DA0	280	40	160	210	24	30	960	998	1105	233	1070	1108	65	M20	140	125	10	18	69	60	M20	140	125	10	18	64	
2DB0, 2DC0	-	-	-	-	-	-	-	-	-	-	-	75	-	-	-	-	-	-	20	80	65	-	-	-	-	69	
2DA2	280	40	160	210	24	30	960	998	1105	233	1070	1108	65	M20	140	125	10	18	69	60	M20	140	125	10	18	64	
2DB2, 2DC2, 2DC6	-	-	-	-	-	-	-	-	-	-	-	75	-	-	-	-	-	-	20	80	65	-	-	-	-	69	
2DA6	-	-	-	-	-	-	1070	1108	1215	-	1180	1218	65	-	-	-	-	-	18	69	60	-	-	-	-	64	
2DB6	-	-	-	-	-	-	-	-	-	-	-	75	-	-	-	-	-	-	20	80	65	-	-	-	-	69	
3AA0	315	50	181	238	28	35	1052	1122	1197	299	1162	1232	65	M20	140	125	10	18	69	60	M20	140	125	10	18	64	
3AB0, 3AC0	-	-	-	-	-	-	1082	-	1227	-	1192	-	80	-	170	140	25	22	85	70	-	-	-	-	-	20	75
3AA2	315	50	181	238	28	35	1217	1287	1362	299	1327	1397	65	M20	140	125	10	18	69	60	M20	140	125	10	18	64	
3AB2	-	-	-	-	-	-	1247	-	1392	-	1357	-	80	-	170	140	25	22	85	70	-	-	-	-	-	20	75
3AC2	-	-	-	-	-	-	1082	-	1227	-	1192	-	-	-	-	-	-	-	-	-	-	-	-	-	-	-	
3AA4	315	50	181	238	28	35	1217	1287	1362	299	1327	1397	65	M20	140	125	10	18	69	60	M20	140	125	10	18	64	
3AB4, 3AC4, 3AC5	-	-	-	-	-	-	1247	-	1392	-	1357	-	80	-	170	140	25	22	85	70	-	-	-	-	-	20	75
3AA5, 3AA6	-	-	-	-	-	-	1372	1442	1517	-	1482	1552	65	-	140	125	10	18	69	60	-	-	-	-	-	18	64
3AB5, 3AB6, 3AC6	-	-	-	-	-	-	1402	-	1547	-	1512	-	80	-	170	140	25	22	85	70	-	-	-	-	-	20	75

<sup>1)</sup> Additional information – not a standard dimension according to DIN EN 50347.

<sup>2)</sup> For version with low-noise fan for 2-pole motors.

<sup>3)</sup> In the low-noise version, a second shaft extension and/or mounted encoder is not possible.