

# SIMOTICS GP 1LE1/1PC1 Standard Motors

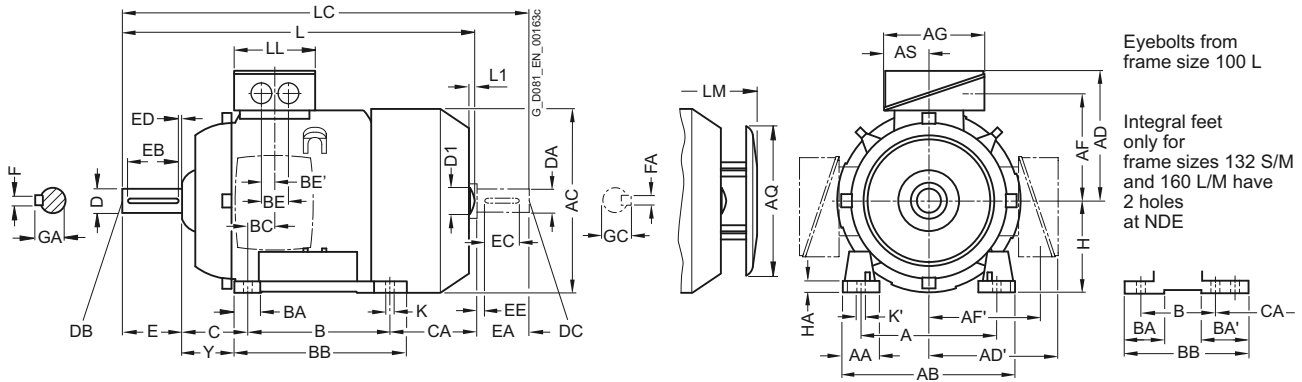
## Dimensions

Aluminum series 1LE1023

Self-ventilated, frame sizes 100 L to 160 L

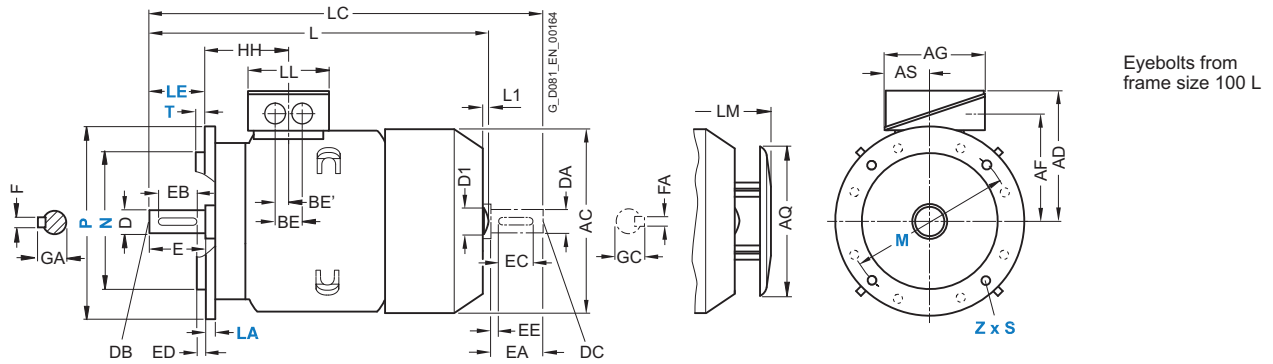
### Dimensional drawings

#### Type of construction IM B3



#### Types of construction IM B5, IM V1

For flange dimensions, see section flange dimension (Z = the number of retaining holes)



For motor			Dimension designation acc. to IEC																							
Frame size	Number of poles	Motor type	A	AA	AB	AC	AD	AD'	AF	AF'	AG	AQ	AS	B*	BA	BA'	BB	BC	BE	BE'	C <sup>1)</sup>	CA*	H	HA	Y <sup>1)</sup>	
1LE1023																										
100 L	2, 4	1AA4, 1AB4, 1AB5	160	42	196	198	166	166	125.5	125.5	135	195	63.5	140	37.5	-	176	33.5	50	25	63	176	100	12	45	
112 M	2, 4	1BA2, 1BB2	190	46	226	222	177	177	136.5	136.5	135	195	63.5	140	35.4	-	176	26	50	25	70	155	112	12	52	
132 S	2, 6	1CA0, 1CC0	216	53	256	262	202	202	159.5	159.5	155	260	70.5	140	38	76 <sup>2)</sup>	218 <sup>3)</sup>	26.5	48	24	89	128.5 <sup>4)</sup>	132	15	69	
	2, 4	1CA1, 1CB0														-					178.5					
132 M	6	1CC2	216	53	256	262	202	202	159.5	159.5	155	260	70.5	178	38	76	218	26.5	48	24	89	128.5 <sup>4)</sup>	132	15	69	
	4, 6, 8	1CB2, 1CC3														-					178.5					
160 M	2, 4, 6	1DA2, 1DA3, 1DB2, 1DC2	254	60	300	314	236.5	236.5	190	190	175	260	77.5	210	44	89 <sup>5)</sup>	300 <sup>6)</sup>	47	57	28.5	108	148 <sup>7)</sup>	160	18	85	
		1DA4, 1DB4, 1DC4														-	300	47	57	28.5	108	208	160	18	85	

\* This dimension is assigned in DIN EN 50347 to the frame size listed.

1) Additional information – not a standard dimension according to DIN EN 50347.

2) With screwed-on feet, dimension BA' is 38 mm.

3) With screwed-on feet, dimension BB is 180 mm.

4) With screwed-on feet, dimension CA is 166.5 mm.

5) With screwed-on feet, dimension BA' is 44 mm.

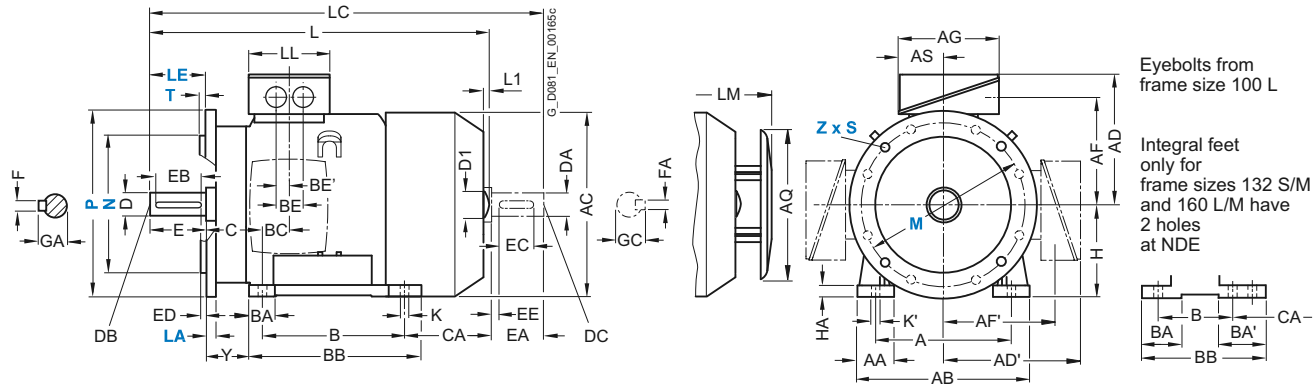
6) With screwed-on feet, dimension BB is 256 mm.

7) With screwed-on feet, dimension CA is 192 mm.

#### Dimensional drawings (continued)

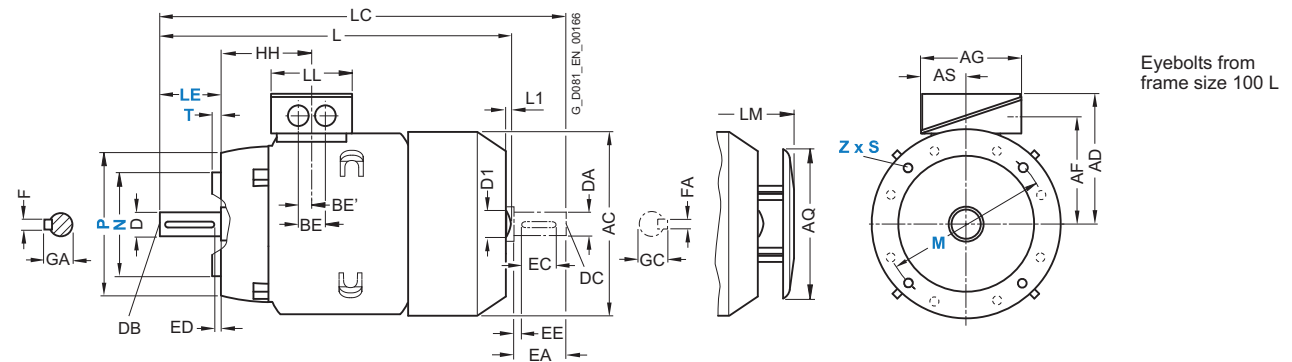
##### Type of construction IM B35

For flange dimensions, see section flange dimension (Z = the number of retaining holes)



##### Type of construction IM B14

For flange dimensions, see section flange dimension (Z = the number of retaining holes)



For motor		Dimension designation acc. to IEC										DE shaft extension					NDE shaft extension								
Frame size	Number of poles	Motor type 1LE1023	HH	K	K'	L <sup>1)</sup>	L1	D1	LC	LL	LM	D	DB	E	EB	ED	F	GA	DA	DC	EA	EC	EE	FA	GC
100 L	2, 4	1AA4, 1AB4, 1AB5	96.5	12	16	430.5	7	32	489	112	463.5	28	M10	60	50	5	8	31	24	M8	50	40	5	8	27
112 M	2, 4	1BA2, 1BB2	96	12	16	414	7	32	475	112	447	28	M10	60	50	5	8	31	24	M8	50	40	5	8	27
132 S	2, 6	1CA0, 1CC0	115.5	12	16	465	8.5	39	535.5	130	516.5	38	M12	80	70	5	10	41	28	M10	60	50	5	8	31
	2, 4	1CA1, 1CB0				515			585.5		550.5														
132 M	6	1CC2	115.5	12	16	465	8.5	39	535.5	130	516.5	38	M12	80	70	5	10	41	28	M10	60	50	5	8	31
	4, 6	1CB2, 1CC3				515			585.5		550.5														
160 M	2, 4, 6	1DA2, 1DA3, 1DB2, 1DC2	155	15	19	604	10	45	730	145	654	42	M16	110	90	10	12	45	42	M16	110	90	10	12	45
160 L	2, 4, 6	1DA4, 1DB4, 1DC4	155	15	19	664	10	45	790	145	714	42	M16	110	90	10	12	45	42	M16	110	90	10	12	45

<sup>1)</sup> The length is specified as far as the tip of the fan cover.