

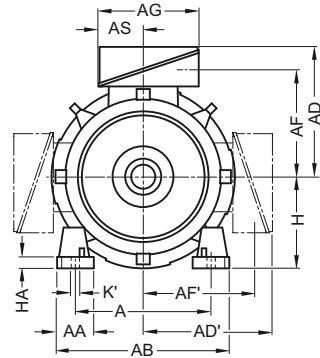
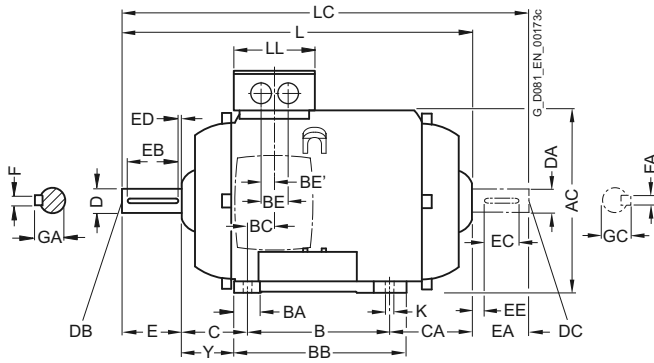
SIMOTICS GP 1LE1/1PC1 Standard Motors

Dimensions

Aluminum series 1LE1001, 1PC1001, 1LE1002, 1PC1002, 1LE1021
Forced-air cooled or naturally cooled, frame sizes 100 L (80 M) to 160 L

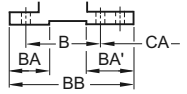
Dimensional drawings

Type of construction IM B3



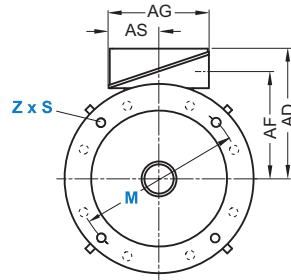
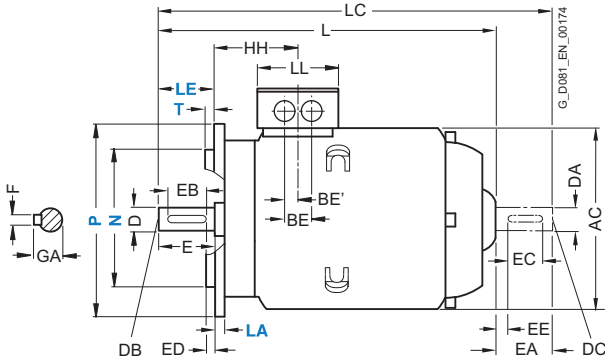
Eyebolts from frame size 100 L

Integral feet only for frame sizes 132 S/M and 160 L/M have 2 holes at NDE



Types of construction IM B5, IM V1

For flange dimensions, see section flange dimension (Z = the number of retaining holes)



Eyebolts from frame size 100 L

For motor			Dimension designation acc. to IEC																					
Frame size	Number of poles	Motor type	A	AA	AB	AC	AD	AD'	AF	AF'	AG	AS	B*	BA	BA'	BB	BC	BE	BE'	C ¹⁾	CA*	H	HA	Y ¹⁾
80 M	2, 4, 6		125	30.5	150	159	121	-	96.5	-	93	43	100	32	-	118	23	-	18 ²⁾	50	-	80	8	41
90 S	2, 4, 6	1LE1001	140	30.5	165	178	126	-	101.5	-	93	43	100	33	-	143	22.5	-	18 ²⁾	56	-	90	10	47
90 L	2, 4, 6		140	30.5	165	178	126	-	101.5	-	93	43	125	33	-	143	22.5	-	18 ²⁾	56	-	90	10	47
100 L	2, 4, 6, 8	All	160	42	196	197	166	166	125.5	125.5	135	63.5	140	37.5	-	176	33.5	50	25	63	-	100	12	45
112 M	2, 4, 6, 8	All	190	46	226	221	177	177	136.5	136.5	135	63.5	140	35.4	-	176	26	50	25	70	-	112	12	52
132 S	2, 4, 6, 8	All	216	53	256	261	202	202	159.5	159.5	155	70.5	140	38	76 ²⁾	218 ³⁾	26.5	48	24	89	-	132	15	69
132 M	2, 4, 6, 8	All	216	53	256	261	202	202	159.5	159.5	155	70.5	178	38	76	218	26.5	48	24	89	-	132	15	69
160 M	2, 4, 6, 8	All	254	60	300	314	236.5	236.5	190	190	175	77.5	210	44	89 ⁴⁾	300 ⁵⁾	47	57	28.5	108	-	160	18	85
160 L	2, 4, 6, 8	All	254	60	300	314	236.5	236.5	190	190	175	77.5	254	44	89	300	47	57	28.5	108	-	160	18	85

* This dimension is assigned in DIN EN 50347 to the frame size listed.

1) Additional information – not a standard dimension according to DIN EN 50347.

2) With screwed-on feet, dimension BA' is 38 mm.

3) With screwed-on feet, dimension BB is 180 mm.

4) With screwed-on feet, dimension BA' is 44 mm.

5) With screwed-on feet, dimension BB is 256 mm.

SIMOTICS GP 1LE1/1PC1 Standard Motors

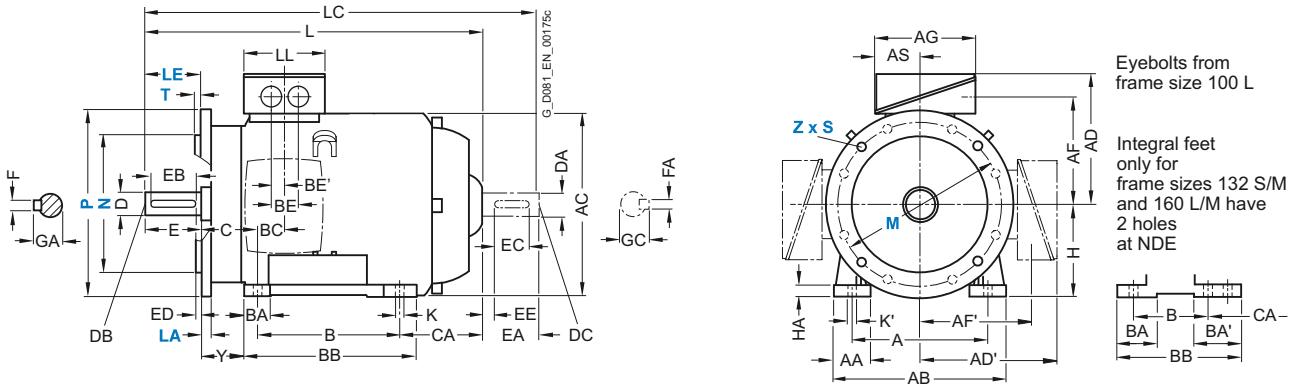
Dimensions

Aluminum series 1LE1001, 1PC1001, 1LE1002, 1PC1002, 1LE1021
 Forced-air cooled or naturally cooled, frame sizes 100 L (80 M) to 160 L

Dimensional drawings (continued)

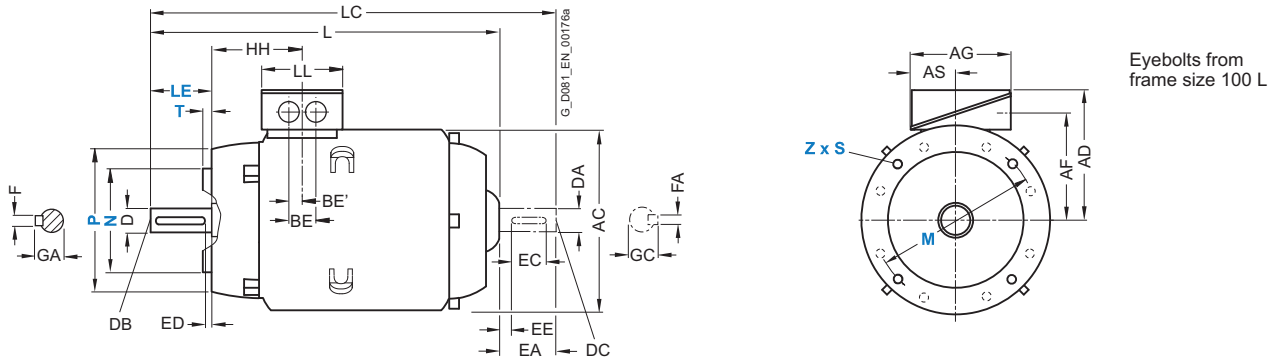
Type of construction IM B35

For flange dimensions, see section flange dimension (Z = the number of retaining holes)



Type of construction IM B14

For flange dimensions, see section flange dimension (Z = the number of retaining holes)



For motor			Dimension designation acc. to IEC							DE shaft extension					NDE shaft extension							
Frame size	Number of poles	Motor type	HH	K	K'	L	LC	LL	D	DB	E	EB	ED	F	GA	DA	DC	EA	EC	EE	FA	GC
80 M	2, 4, 6	1LE1001	73	9.5	13.5	253	-	79	19	M6	40	32	4	6	21.5	-	-	-	-	-	-	-
90 S	2, 4, 6		78.5	10	14	295	-	79	24	M8	50	40	5	8	27	-	-	-	-	-	-	-
90 L	2, 4, 6		78.5	10	14	295	-	79	24	M8	50	40	5	8	27	-	-	-	-	-	-	-
100 L	2, 4, 6, 8	All	96.5	12	16	321.5	-	112	28	M10	60	50	5	8	31	-	-	-	-	-	-	-
112 M	2, 4, 6, 8	All	96	12	16	311	-	112	28	M10	60	50	5	8	31	-	-	-	-	-	-	-
132 S	2, 4, 6, 8	All	115.5	12	16	380.5	-	130	38	M12	80	70	5	10	41	-	-	-	-	-	-	-
132 M	2, 4, 6, 8	All	115.5	12	16	380.5	-	130	38	M12	80	70	5	10	41	-	-	-	-	-	-	-
160 M	2, 4, 6, 8	All	155	15	19	510	-	145	42	M16	110	90	10	12	45	-	-	-	-	-	-	-
160 L	2, 4, 6, 8	All	155	15	19	510	-	145	42	M16	110	90	10	12	45	-	-	-	-	-	-	-