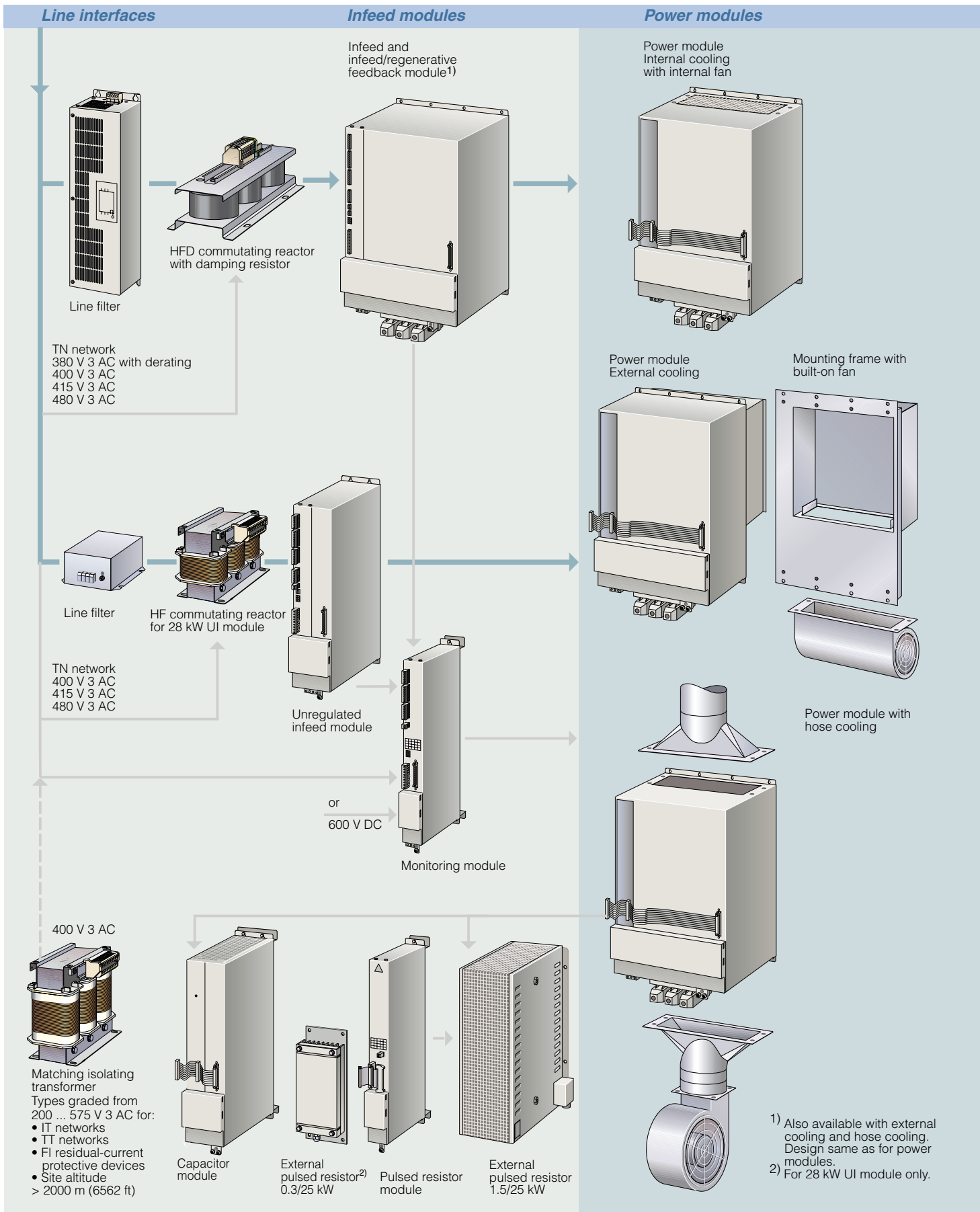


Converter system SIMODRIVE 611

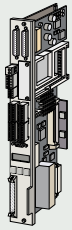
Overview of the drive system



9

Control units

Control units with analog setpoint interface/PROFIBUS



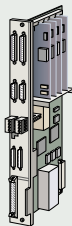
For 1FT6/1FT7/1FK7/1FN3/1FW6/1PH/2SP1/1FE1 motors and 1LA asynchronous motors

- Single-axis version with resolver only
- Two-axis version
 - For motor encoder
 - Resolver

Standard: analog setpoint interface

Option: PROFIBUS

Control units with digital setpoint interface



For 1FT6/1FT7/1FK7/1PH/1PM/2SP1/1FE1 motors

- Two-axis version with High Standard control
 - For motor encoder
 - Additional measuring system for voltage signals

For 1FT6/1FT7/1FK7/1FN3/1FW6/1PH/1PM/2SP1/1FE1 motors

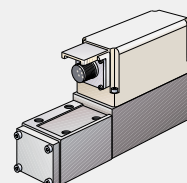
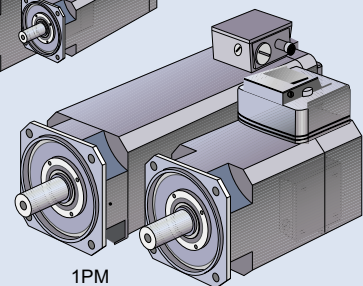
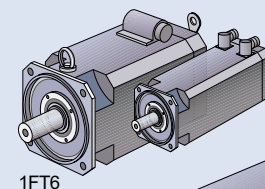
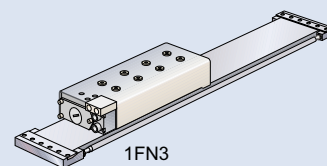
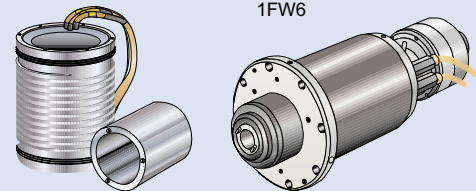
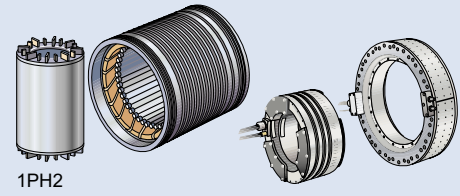
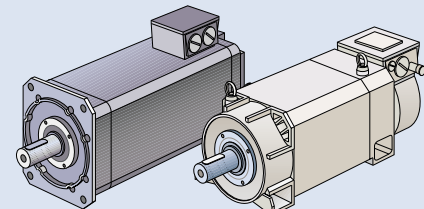
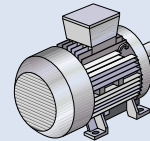
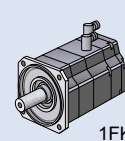
- Single-axis version with High Performance control
 - For motor encoder
 - Additional measuring system for voltage signals
- Two-axis version with High Performance control
 - For motor encoder
 - Additional measuring system for voltage signals
EnDat + SSI



For hydraulic linear axes HLA/ANA

- Two-axis version

Motors



G_NC01_EN_003086