

Synchronous motors

Dimensional drawings

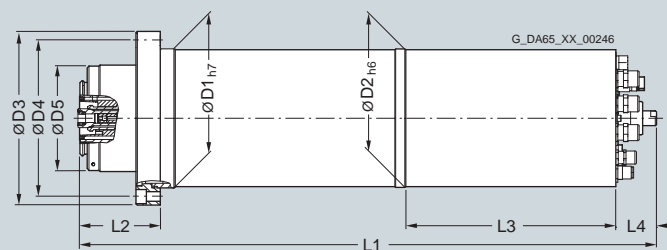
2SP1 motor spindles Water cooling

Dimensional drawings

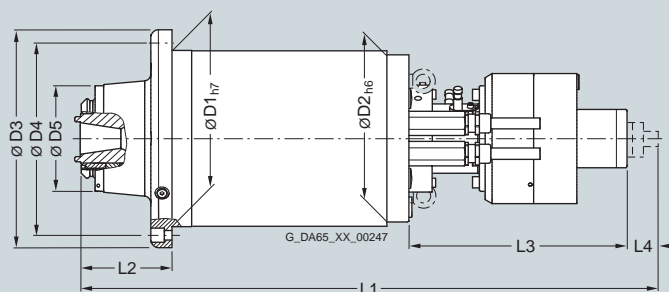
For motor Dimensions in mm (inches)

Type	D1	D2	D3	D4	D5	L1 ¹⁾	L2	L3	L4
2SP1, water cooling									
2SP1202	200 (7.88)	199 (7.84)	250 (9.85)	225 (8.87)	150 (5.91)	735 ⁴⁾ (28.94)	115.5 (4.55)	309 ⁴⁾ (12.17)	58 ⁴⁾ (2.28)
2SP1204						835 ⁴⁾ (32.87)			
2SP1253 ²⁾	250 (9.85)	237 (9.34)	310 (12.21)	275 (10.84)	150 (5.91)	813 (32.03)	124.4 (4.90)	310 (12.21)	43 (1.69)
2SP1255 ²⁾						913 (35.97)			
2SP1253 ³⁾						819 (32.27)	130.0 (5.12)		
2SP1255 ³⁾						919 (36.21)			

2SP120



2SP125



7

¹⁾ The spindle is approx. 43 mm (1.69 in) shorter without turning bushing.

²⁾ HSK A63 tool interface.

³⁾ SK40, CAT40, BT40 tool interfaces.

⁴⁾ Spindle length $L1$ is approx. 118 mm (4.65 in) shorter, $L3$ approx. 147 mm (5.79 in) shorter and $L4$ approx. 30 mm (1.18 in) longer with a hydraulic tool clamping device.